

John T. Hellard-Realtor
1535 Hawkins
Suite D
El Paso, TX 79925

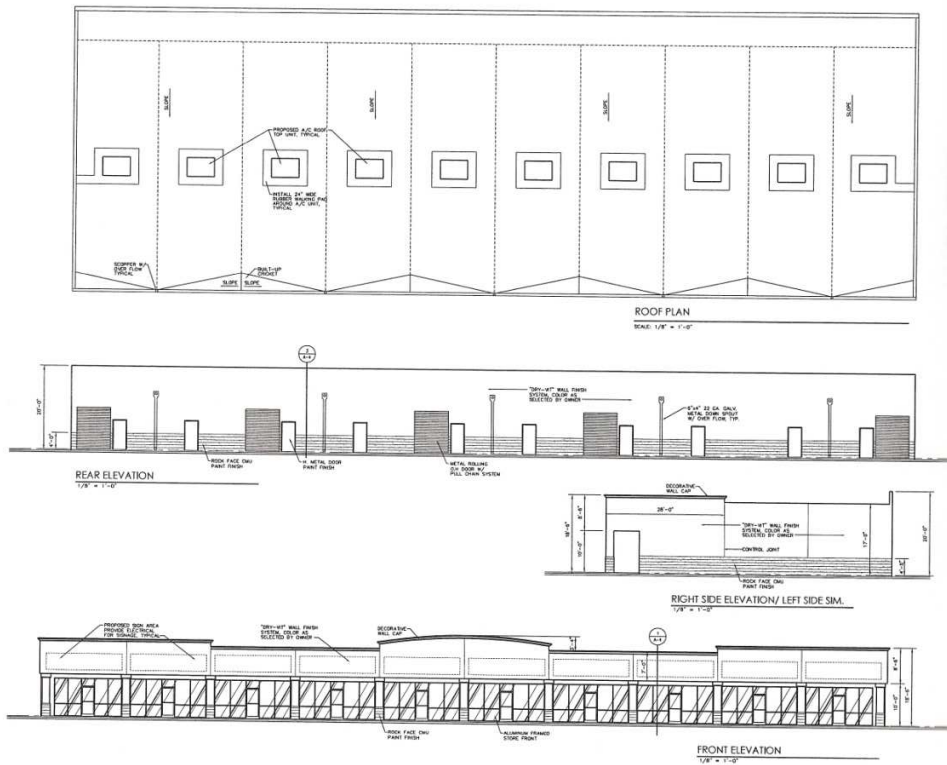
10280 Montana
Brochure



For Additional Information:

Leasing Agent
Jeff Hellard
(915) 593-1957 Office
(915) 593-8807 Fax
(915) 539-4373 Cell

Co-Leasing Agent
Debra Hellard-Dominguez
(915) 593-1957 Office
(915) 487-7536 Cell
(915) 593-8807 Fax



Location:	10280 Montana Ave
Current Space Available:	9600 Sq.ft. (approx)
Minimum Divisible Space:	1200 Sq.ft.
Base Rent:	\$1400.00/month (\$14.00/SF)
Taxes, Insurance, Common Area and Other Charges: (Estimated)	Tenant shall pay its "estimated" pro-rata share of Taxes, Insurance and Common Area Maintenance charges. Said charges are currently estimated at \$3.50 p.s.f./annum (Electric, and gas are separately metered and to be paid directly by tenant.) Water will be charged each month to tenant based on tenants' pro-rata share.
Minimum Lease Term:	Five (5) Years with Options to Renew.

*The information contained herein has been obtained from sources deemed reliable, but is not guaranteed and subject to withdrawal without prior notice.